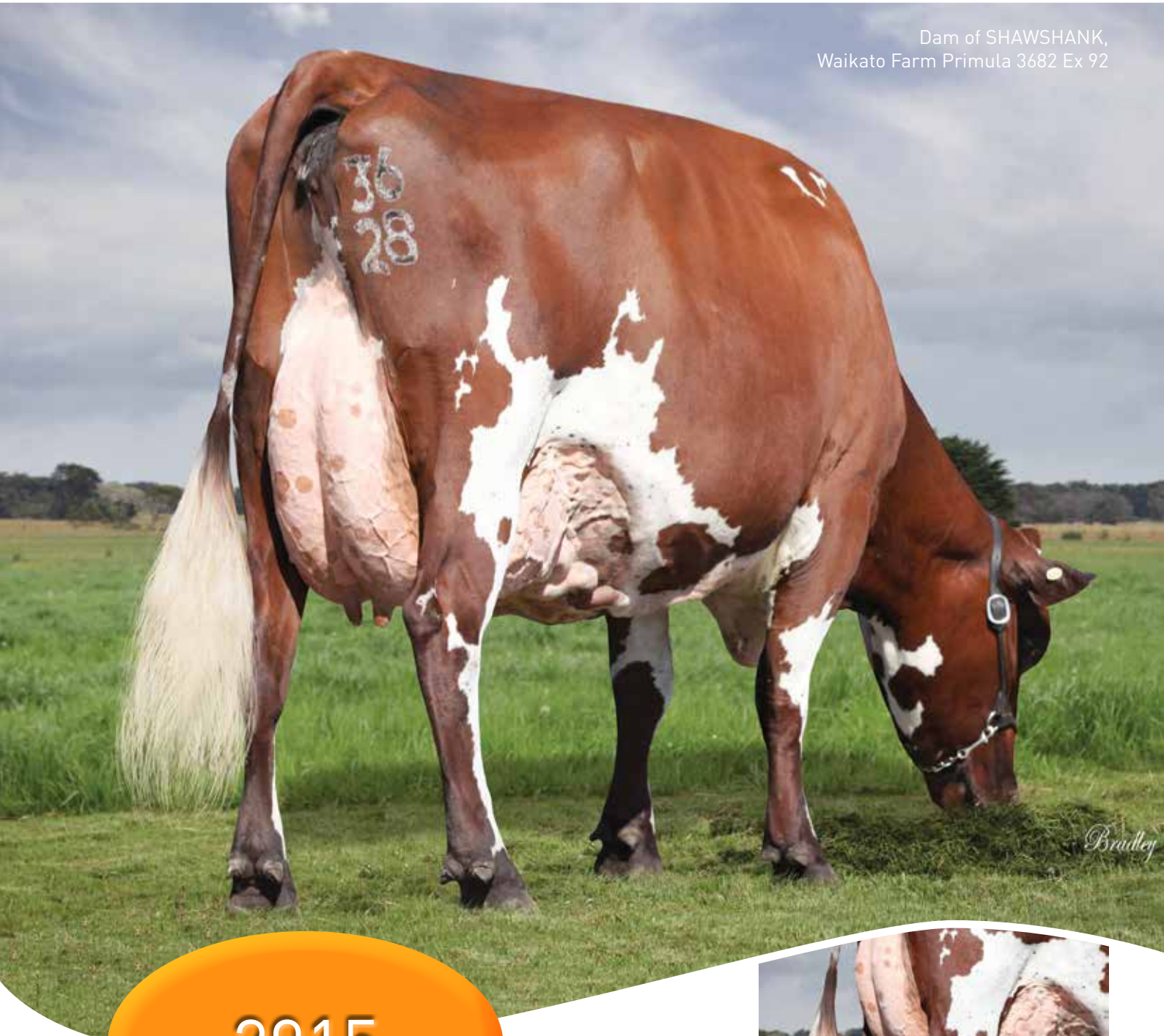




Aussie Red Sire Directory

Dam of SHAWSHANK,
Waikato Farm Primula 3682 Ex 92



Bradley

2015



www.auzredxb.com.au

"Bred to excel under Australian pasture based dairying conditions"

TEAM 2015 Elite Young Aussie Reds

Australia's highest ever genetic merit team of Progeny Test Aussie Red sires are here. These Elite young sires are selected from sound maternal lines with their dams featuring at the top of the Aussie Red ABV cow list for genetic merit. Farmer confidence in the team is ensured with all females in the maternal lines of each of these Elite young sires being thoroughly checked for any faults. All bull Dams are selected strongly on Genetic Merit, Udders, Temperament, Type, Fertility and Longevity, combined with very high Production and Components.

Team 2015 Elite young sires have very high Progeny Test starting ABV's and offer dairy farmers the chance to use and help prove Australia's Elite team of young Aussie Red sires.

JAMAR

ARBLIPPMAN/PETERSLUND/SKOLE

BPI **189**

RRP
\$12
PLUS GST

NEW

NASIS ID. **05UUK01**
BULL ID. **AXBJAMAR**



- DAM, THE NO.1 ABV AUSSIE RED COW IN 2013

- Ten generations exceeding their predicted ABV's behind this exciting young sire
- Highest Genetic Merit sire selected to date
- High Progeny Test starting ABV
- Longevity, Production and Components

Dam of JAMAR

ABV(i)

BPI	HWI	TWI	BPI%	TWI%	TWI%
189	145	174	29	23	25

Production

Daughters 0 - Herds 0 - 43% Reliability

ASI	P(kg)	F(kg)	P(%)	F(%)	MILK (L)
126	+18	+18	+0.19	+0.07	+308

Functional traits

MS	TEMP	LIKE	FERT	SURV	CC
102	100	100	101	105	114

AOTEAROA

EIK/SYDFREM/ORRARYD

BPI **144**

RRP
\$12
PLUS GST

NEW

NASIS ID. **05UUK04**
BULL ID. **AXBAOTEAROA**



- 4 GENERATIONS OF MATERNAL LINE STILL MILKING!

- Half-Sister is current No2. ABV Aussie Red cow
- BPI 318, ASI 292, + 42 kg P, +49 kg BF
- Exceptionally placid maternal line is a feature
- Already Team 2015's highest demand sire

Dam of AOTEAROA

ABV(i)

BPI	HWI	TWI	BPI%	TWI%	TWI%
144	98	131	19	13	16

Production

Daughters 0 - Herds 0 - 36% Reliability

ASI	P(kg)	F(kg)	P(%)	F(%)	MILK (L)
135	+22	+12	+0.21	-0.07	+414

Functional traits

MS	TEMP	LIKE	FERT	SURV	CC
102	101	102	102	101	108

SHAWSHANK

ARB LIPPMAN/IRISHMAN/B JURIST

BPI **170**

RRP
\$12
PLUS GST

NEW



- ELITE GENETICS AT IT'S BEST!

- Dam, No. 1 ranked ABV Ayrshire cow, plus Ex 92
- ASI 173, Protein @ +0.34%, B/Fat @ +0.82%
- Production to 1008 kg MS @ 3.8% Pro & 4.4% B/fat
- G Dam produced over 100,000 lts
- Very high Progeny Test starting ABV

NASIS ID. 05UUK03
BULL ID. AXBSHAWSHANK

ABV(i)

BPI	HWI	TWI	BPI%	TWI%	TWI%
170	122	161	27	22	24

Production

Daughters 0 - Herds 0 - 41% Reliability

ASI	P(kg)	F(kg)	P(%)	F(%)	MILK (L)
137	+14	+30	+0.20	+0.35	+137

Functional traits

MS	TEMP	LIKE	FERT	SURV	CC
100	100	100	103	103	111

Dam of SHAWSHANK, Waikato Farm Primula 3682 Ex 92

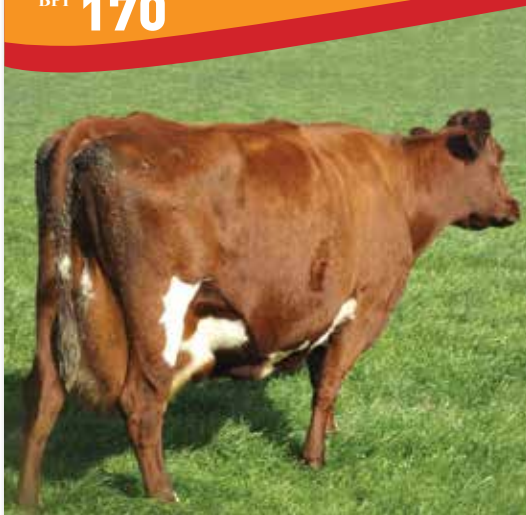
RED MILE

ARB LEX/PETERSLUND/ARBPATRICK

BPI **170**

RRP
\$12
PLUS GST

NEW



- DAM NO.1 ABV AUSSIE RED COW IN 2014

- BPI 267, ASI 191, +21 P @ +0.31%, + 36 BF @ +0.42%
- Elite Red genetics at it's best
- Components, Fert, Survival and Type!

NASIS ID. 05UUK04
BULL ID. AXBREDMILE

ABV(i)

BPI	HWI	TWI	BPI%	TWI%	TWI%
170	126	147	29	23	25

Production

Daughters 0 - Herds 0 - 43% Reliability

ASI	P(kg)	F(kg)	P(%)	F(%)	MILK (L)
127	+15	+22	+0.20	+0.22	+153

Functional traits

MS	TEMP	LIKE	FERT	SURV	CC
100	100	101	105	104	102

Dam of RED MILE, Waikato Farm Clarebelle 3662 Ex 90

MT SCHANK

VR CIGAR/ARB LIPPMAN

BPI **122**

RRP
\$12
PLUS GST

NEW



- DAM, NO. 4 RANKED ABV AUSSIE RED COW IN 2014

- Exceptional production and Udder
- 10663 lts, 388 kg Protein on 2nd Lactation
- Elite young sire that has lots to offer

NASIS ID. 05UUK05
BULL ID. AXBMTSCHANK

ABV(i)

BPI	HWI	TWI	BPI%	TWI%	TWI%
122	85	111	7	5	6

Production

Daughters 0 - Herds 0 - 12% Reliability

ASI	P(kg)	F(kg)	P(%)	F(%)	MILK (L)
110	+20	+28	+0.19	+0.25	+377

Functional traits

MS	TEMP	LIKE	FERT	SURV	CC
102	101	102	102	101	111

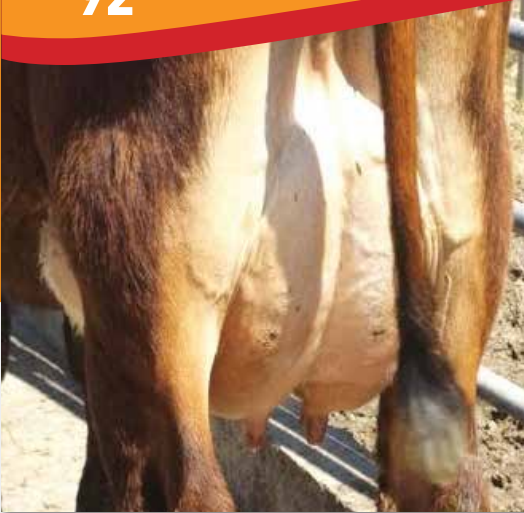
Dam of MT SCHANK

CJ

A LINNE/ARBMAHATMA

BPI **92**

RRP
\$12
PLUS GST



- MILKING DAUGHTERS ARE IMPRESSIVE

- Great production averaging 109 PI
- Medium size and very efficient
- Very good Udders and Placid

CJ daughter

NASIS ID. 05UUG02
BULL ID. AXBCJ

ABV(i)

BPI	HWI	TWI	BPI%	TWI%	TWI%
92	73	81	46	37	42

Production

Daughters II - Herds I - 68% Reliability

ASI	P(kg)	F(kg)	P(%)	F(%)	MILK (L)
80	+16	+5	+0.10	-0.07	+386

Functional traits

MS	TEMP	LIKE	FERT	SURV	FEED SAVED
104	103	104	101	103	47

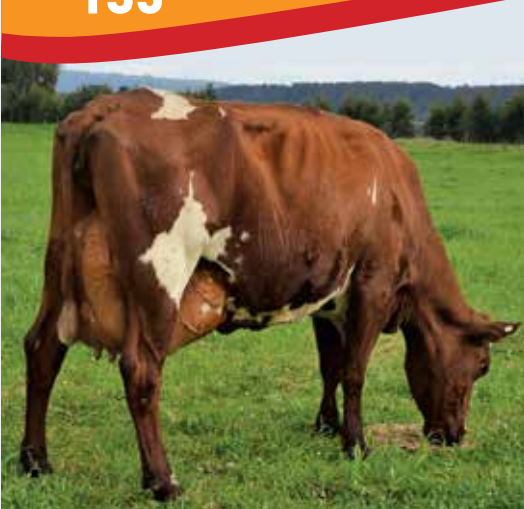
Kappa Casein: A2A2

FONTERRA

V FOSKE/OLSTAD/CHRISTIANSBORG 125

BPI **135**

RRP
\$12
PLUS GST



- PRODUCTION, COMPONENTS AND WORKABILITIES

- Extremely popular Elite young sire from Team 2014
- Exceptional maternal line
- Medium sized for efficiency

Dam of FONTERRA

NASIS ID. 05UUJ01
BULL ID. AXBFONTERRA

ABV(i)

BPI	HWI	TWI	BPI%	TWI%	TWI%
135	78	116	31	26	29

Production

Daughters 0 - Herds 0 - 12% Reliability

ASI	P(kg)	F(kg)	P(%)	F(%)	MILK (L)
150	+23	+23	+0.18	+0.02	+508

Functional traits

MS	TEMP	LIKE	FERT	SURV	CC
101	102	103	102	100	107

GLADIATOR

V FOSKE/TORP 882

122 A2A2

RRP
\$14
PLUS GST



- HALF BROTHER OF ARB BON JOVI

- Dam the famous Bosgowan Primula 278 Ex 91
- His heifer calves are strong and look fantastic
- Components, Production and Longevity a feature of this family

Dam of GLADIATOR at 14 years

NASIS ID. 05UUJ03
BULL ID. AXBGLADIATOR

ABV(i)

BPI	HWI	TWI	BPI%	TWI%	TWI%
149	94	123	33	28	31

Production

Daughters 0 - Herds 0 - 45% Reliability

ASI	P(kg)	F(kg)	P(%)	F(%)	MILK (L)
147	+18	+28	+0.20	+0.25	+258

Functional traits

MS	TEMP	LIKE	FERT	SURV	CC
102	101	102	102	101	120

BLACKWOOD

ARBONJOVI/FYNAKS

BPI **153**

RRP
\$12
PLUS GST

NASIS ID. 05UUJ02
BULL ID. AXBBLACKWOOD

- **HIGHEST PREDICTED BPI YOUNG SIRE IN TEAM 2014**

- Dam is **super-efficient** at 1.28 kg MS/ kg LW
- Very high predicted Fertility and Survival
- Elite Bonjovi son, this extremely high genetic merit young sire is a very exciting prospect to use in your herd

ABV(i)

BPI	HWI	TWI	BPI%	TWI%	TWI%
153	116	137	32	27	30

Production

Daughters 0 - Herds 0 - 42% Reliability

ASI	P(kg)	F(kg)	P(%)	F(%)	MILK (L)
92	+10	+21	+0.11	-0.20	+171

Functional traits

MS	TEMP	LIKE	FERT	SURV	CC
101	99	101	104	103	113

COMMODUS

V FOSKE/FYNAKS

BPI **147**

RRP
\$12
PLUS GST

NASIS ID. 05UUH01
BULL ID. AXBCOMMODUS

- **NO. 2 PICK BY ARDB SELECTION COMMITTEE**



- Dam production to 11185 lts and 365 kg Pro

- Very high predicted Fertility and Survival

- With plenty of great looking calves on the ground

- High predicted Production and Health

ABV(i)

BPI	HWI	TWI	BPI%	TWI%	TWI%
147	91	135	31	26	29

Production

Daughters 0 - Herds 0 - 44% Reliability

ASI	P(kg)	F(kg)	P(%)	F(%)	MILK (L)
143	+24	+24	+0.11	-0.08	+687

Functional traits

MS	TEMP	LIKE	FERT	SURV	CC
100	102	103	101	101	126

TOP DECK

V FOSKE/STENSJO/TORLAND

BPI **145** A2A2

RRP
\$14
PLUS GST

NASIS ID. 05UUH12
BULL ID. AXBTOPDECK

- **DAM STILL MILKING AT 15 Y/O**

- 100,000+ litres to date
- Half-brother of ARBLippman
- Huge Production and potential



ABV(i)

BPI	HWI	TWI	BPI%	TWI%	TWI%
145	85	122	32	27	30

Production

Daughters 0 - Herds 0 - 44% Reliability

ASI	P(kg)	F(kg)	P(%)	F(%)	MILK (L)
168	+27	+31	+0.13	-0.01	+750

Functional traits

MS	TEMP	LIKE	FERT	SURV	CC
102	102	103	99	100	107

MAXIMUS

G EDBO/HEDAKER/FYNAKS

BPI **119**

RRP
\$12
PLUS GST

NASIS ID. 05UUH02
BULL ID. AXBMAXIMUS

- **VERY IMPRESSIVE ELITE YOUNG SIRE**

- Sire line offers Production, Longevity, Fertility and Calving Ease

- From the high genetic merit Bosgowan Princess dam line



ABV(i)

BPI	HWI	TWI	BPI%	TWI%	TWI%
119	107	115	28	23	26

Production

Daughters 0 - Herds 0 - 40% Reliability

ASI	P(kg)	F(kg)	P(%)	F(%)	MILK (L)
70	+14	+11	+0.03	-0.11	+446

Functional traits

MS	TEMP	LIKE	FERT	SURV	CC
100	100	101	100	102	110